

## PRO4 & PRO5 GEN2 Updating Guide

New firmware to update, fix, or change functionality of products becomes available occasionally. Atlona has made this as easy as possible for updating on the job by simply downloading from Atlona.com and installing through an RS-232 9-pin cable.

**NOTE:** Only use a Windows computer to update. Use of an Apple computer to update will cause the device to be unusable until a Windows computer is used to update.

### I. Requirements:

- AT-LINE-PRO4 or PRO5 w/ power supply
- Desktop PC or Laptop PC w/ RS-232 Port
- RS-232 cable (9-pin, Female -to-Male, non-crossover type)
- ISP Writer (Windows Software App)
- Binary files (.bin) of the latest firmware

### II. Installation:

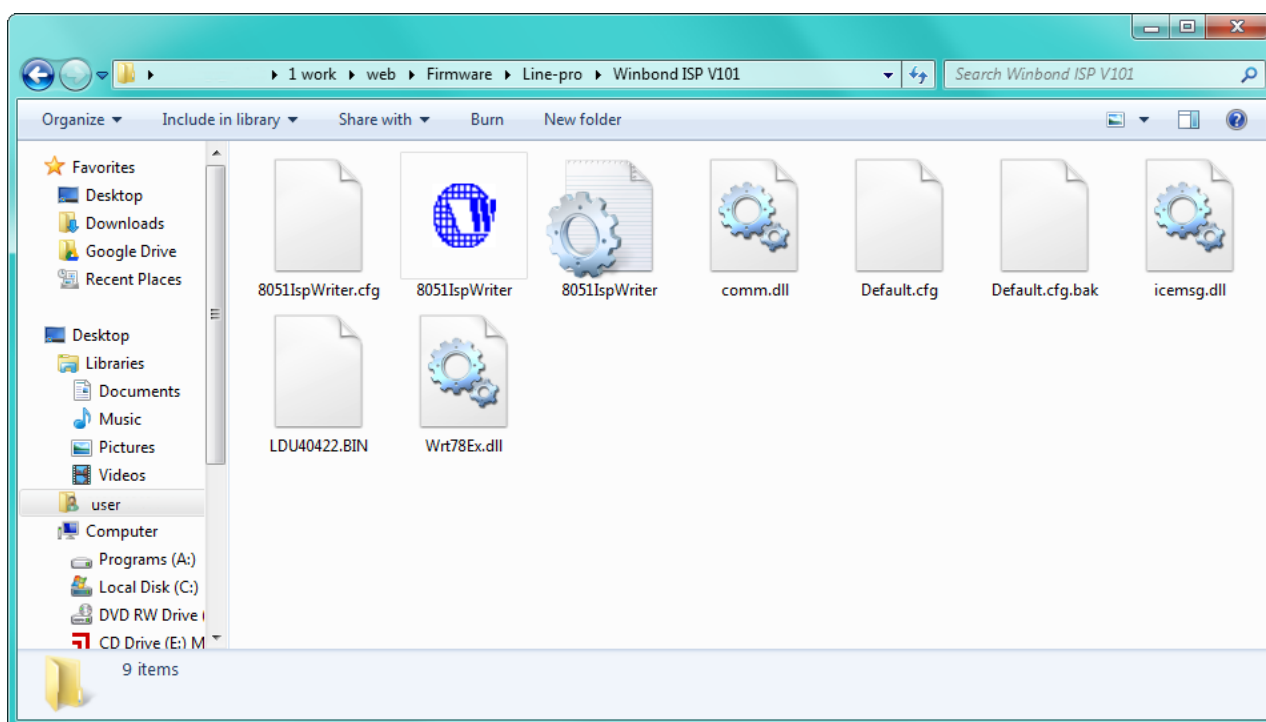
- Connect AT-LINE-PRO and PC by using RS-232 cable.

### III. Enter ISP Mode:

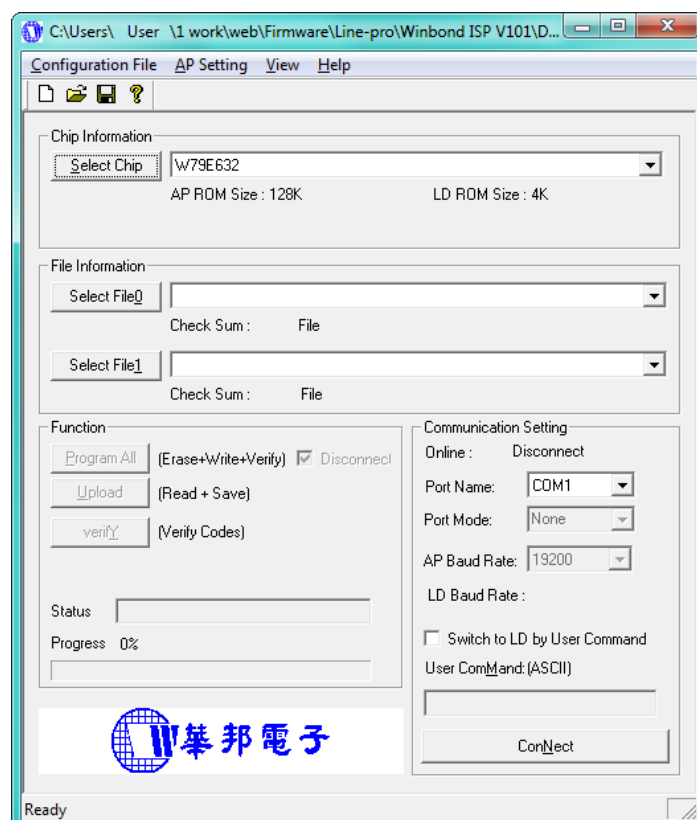
- Unplug the power supply from AT-LINE-PRO if it is plugged in.
- Press and HOLD the POWER button.
- Plug in the power supply. <Note>: If you don't see the LED illuminating, this means the unit has entered the ISP mode successfully.

### IV. Firmware Upgrade:

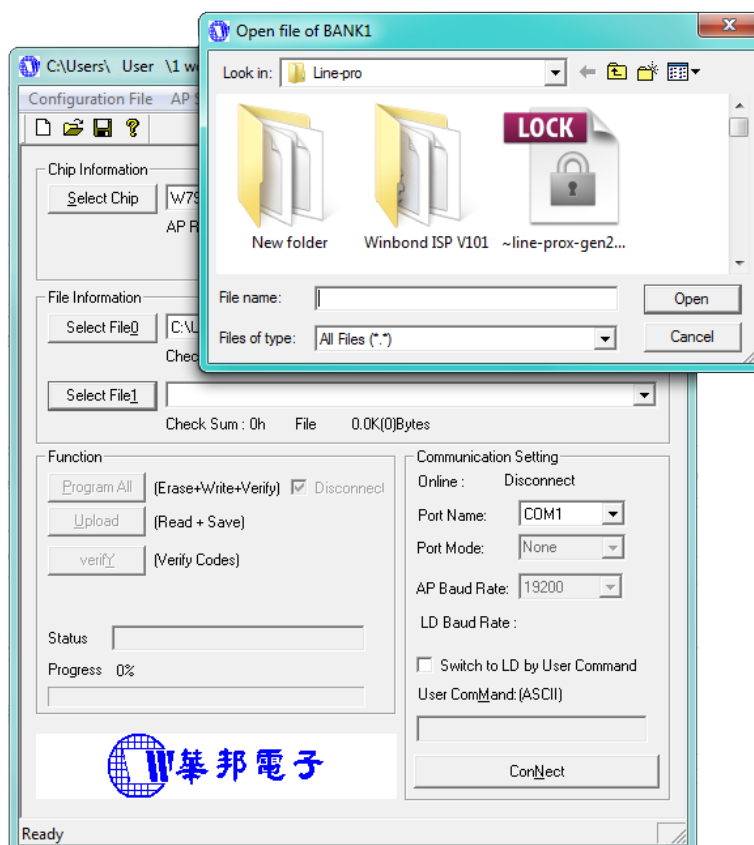
- In Windows, close any applications that may be occupying the RS-232 channel, such as HyperTerminal.
- Execute "8051ISPWriter.exe", the ISP Writer, and a dialogue window will appear.



c. Select "W79E632" in the (Select Chip) field.



d. Browse and select the T00 and T01 .bin files of the firmware.



- e. Press the "ConNect" button and if this button has changed to "ConNect Next Chip", the connection between PC and AT-LINE-PRO has been established. If a prompt appears notifying you that the connection has failed, please restart from beginning.
- f. Press "Program All" to start programming/writing the firmware to the microchip.
- g. Once the firmware has completed successfully you should see a "Program: OK!" pop-up.
- h. If a dialogue box with the message "Program: Fail!" appears, the firmware upgrade has failed, and it could be caused due to incorrect binary files being selected or the microchip may be faulty. Please contact Atlona for additional support.

V. Verification:

Once the firmware upgrade is completed successfully, the unit will reboot itself and then enter the regular mode of operation. Enter the OSD menu and look into the info page to ensure the version of the firmware on the device matches the version of the firmware on the .bin files.